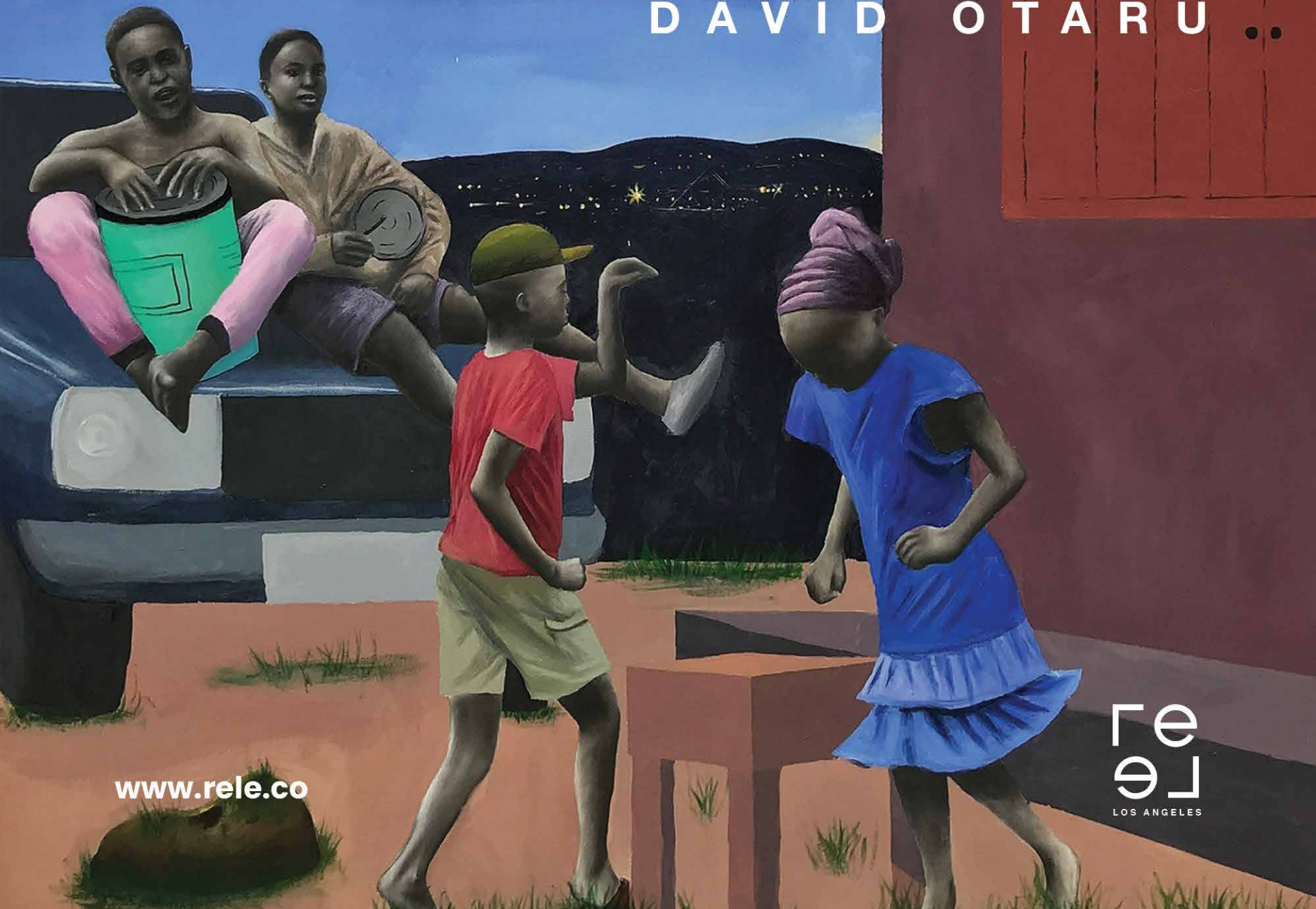


# PARTY SERIES

DAVID OTARU



[www.rele.co](http://www.rele.co)

re  
le  
LOS ANGELES

# Party Series

## David Otaru

Rele Gallery Los Angeles is pleased to present new works by David Otaru. Titled 'Party Series', this body of work explores ideas around party culture and social events. Combining drawing and painting techniques, Otaru references personal experiences as well as popular culture in creating illustrative scenes of euphoria and merriment. These paintings at once convey the different textures to 'partying' as well as the social negotiation of space. From bodies writhing against each other in bright lights to a quiet day at the pool with friends, they serve to create dynamic and diverse considerations on relaxation and communal fun.

In the wake of social distancing and isolation, Otaru points to a need for moments of companionship and pleasure that social gatherings afford. Moments that help to ease one out of the rigours of daily life. Here, the hedonistic functions as a means to recenter the self, a pause from the mundane. From elaborate house parties to more intimate gatherings, the artist invites us into a celebration of the moment, into a space to unwind and maybe find respite, however brief.



**One Quick Selfie**

Acrylic Charcoal and Gold leaf  
on Canvas

36 x 48 inches

2021

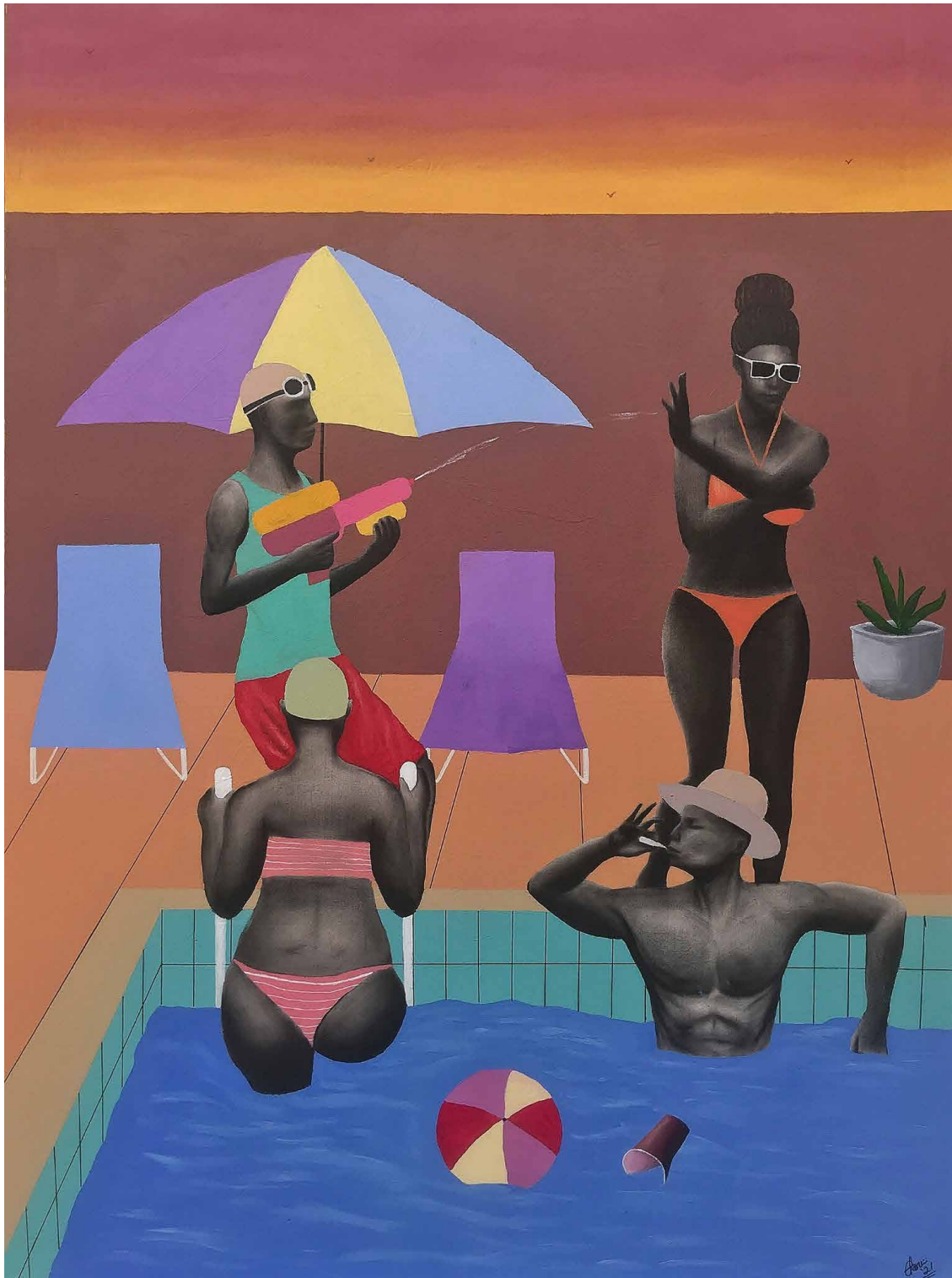


**Party by Moonlight**

Acrylic Charcoal and Gold leaf  
on canvas

36 x 48 inches

2021



**Poolside Rave**

Acrylic and Charcoal on Canvas

36 x 48 inches

2021



**Houseparty**

Acrylic, goldleaf and charcoal on canvas

48 x 60 in

2021



**House Party**

144 x 48 inches, Acrylic,  
Charcoal and Gold Leaf on Canvas,  
2021 (Triptych)

# David Otaru

David Otaru (b.1991) is a self-taught artist from Edo state, Nigeria. He holds a degree in English and Literature Education from the University of Benin, Nigeria. Combining several mediums, Otaru's work depicts dynamic, yet recognisable scenes populated with figures caught in random moments of their daily lives. His work incorporates the use of metaphors and familiar imagery in telling multi-layered stories of everyday life, socio-economic conditions and societal structures. Exploring the use of the negative image in his work, the artist considers the growing relationship between art and technology in contemporary society.

David Otaru lives and works in Lagos.



# PARTY SERIES

DAVID OTARU

address 8215, Melrose Ave, Los Angeles, CA 90046

8215, Melrose Ave,  
Los Angeles, CA 90046

[www.rele.co](http://www.rele.co)

re  
re  
LOS ANGELES